



**Great Electrical**

**GRT508C-16A**



- Applicable to the external meter, household intelligent control and remote unattended station equipment
- Small in dimension, PCB installation
- Dimensions: 29×25×13(mm)

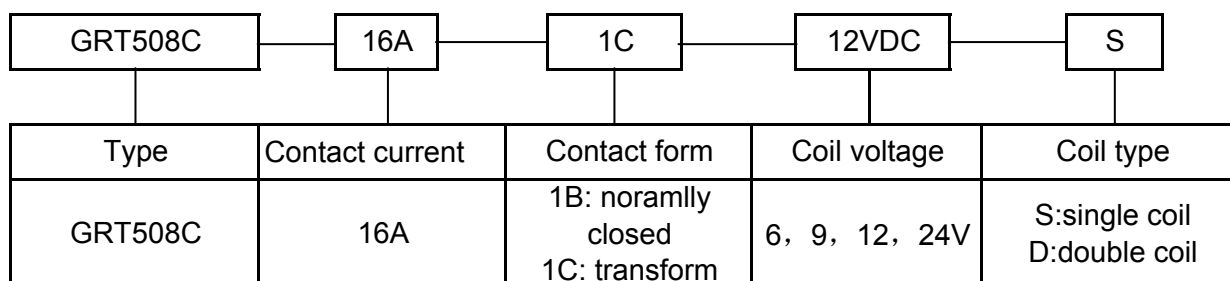
**Contact parameter**

Contact form	1B/1C	
Contact resistance (1A 6VDC)	Max.50mΩ	
Contact material	Silver alloy	
Contact rating (resistive load)	16A 250VAC	
Max. Switching Voltage	250VAC/28VDC	
Max. Switching Current	16A	
Max. Switching Power	1250VA/140W	
Life	Mechanical life	1×10 <sup>6</sup> OPS
	Electrical life	1×10 <sup>5</sup> OPS

**Performance parameter**

Release Time		15ms Max
Operate Time		15ms Max
Dielectric strength	coil&contact	2000VAC 50/60Hz(1Min)
	between open contacts	750VAC 50/60Hz(1Min)
Insulation resistance		100MΩ Min.(500VDC)
Ambient temperature		-40℃~+70℃
Relative humidity		45%-90% RH
Vibration		10-55Hz, 1.5mm
Impulsion		98m/s <sup>2</sup>
Weight		18g

**Ordering information**



**Typical application**

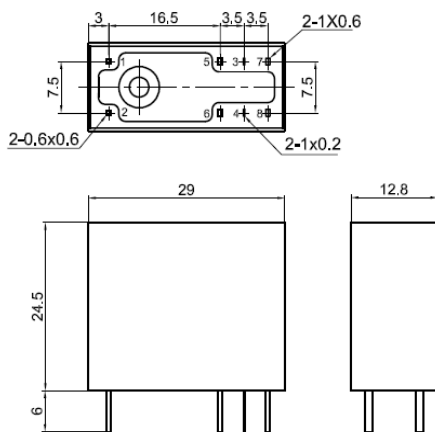
- intelligent electric meter
- electric remote control
- compound switch
- household control

## Coil parameter(20℃)

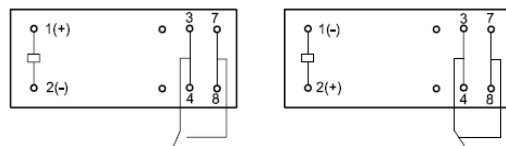
coil code	rated coil (VDC)	Coil resistance (Ω)±10%		Coil power (W)		Release voltage (VDC)	operate voltage (VDC)	over voltage (VDC)	pluse width (ms)
		single coil	double coil	single coil	double coil				
06	6VDC	36	18/18	1W	2W	≤80%	≤80%	≤120%	≥50ms
09	9VDC	81	41/41						
12	12VDC	144	72/72						
24	24VDC	576	288/288						

## Dimension 、 wiring diagram(unit:mm)

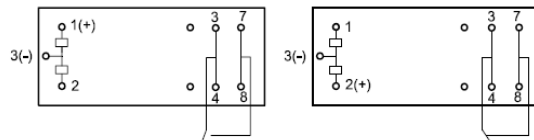
单线圈 Single Coil



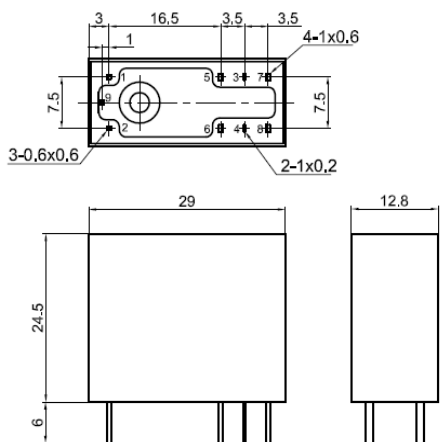
508C-1B-S



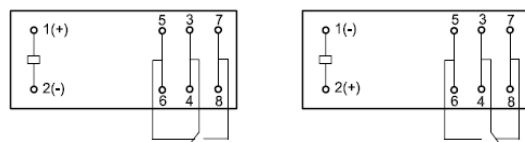
508C-1B-D



双线圈 Double Coil



508C-1C-S



508C-1C-D

